

**Rainbow Model 4X4X13 SBB Pump**



**Rainbow Model 4X4X13 DBB Pump**

## DESCRIPTION

### **Rainbow Model 4X4X13 SBB & DBB Pumps**

End suction centrifugal pumps with computer calculated shaft stress and bearing limits of 20,000 hour B-10 bearing life design minimum. The pump shaft is constructed of stressproof steel. The pump impeller and volute are all cast iron construction with fully machined exterior surfaces and smoothly cast internal passages with replaceable bronze suction and hub wear rings. The pump has internal balance ports designed to extend packing, wear ring, and bearing life and increase pump performance. Available to fit various SAE housing sizes. Includes vibration absorbing rubber drive couplings for connecting pump to engine flywheel.

## Rainbow Centrifugal Pumps

### SAE Mount Engine Drive

## Model 4 X 4 X 13

### FEATURES AND BENEFITS

- \* Capacities - 300 to 800 GPM
- \* Head - Up to 450 Feet
- \* All Cast Iron Construction with Replaceable Nickel / Bronze Wear Rings
- \* Heavy-duty Vibration Absorbing Drive Coupling
- \* Over-sized Shaft threaded on end with Large Impeller Nut
- \* 20,000 hour B-10 Bearing Life Design Minimum
- \* Easy Serviceability - Quick Factory Response

#### SPECIFICATIONS

**Material:** Grade 30 Grey Cast Iron.

**Wear Rings:** Replaceable Nickel / Bronze Alloy.

**Impeller:** Enclosed, balanced, keyed to shaft. Precision machined Cast Iron.

**Pump Shaft:** Stressproof steel. Threaded on end for Large Impeller Nut.

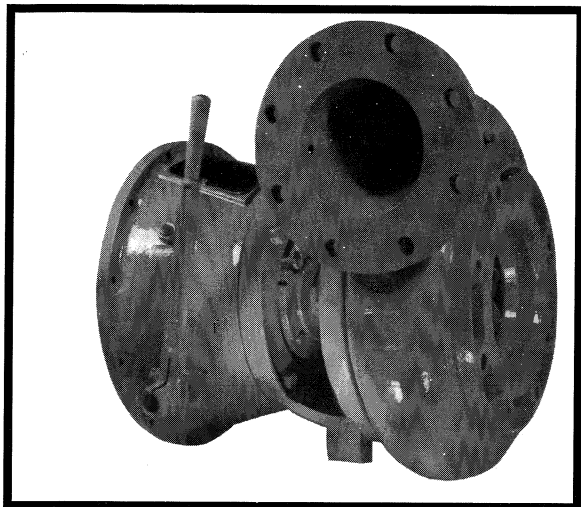
**Seals:** Packing Box Standard. Optional Mechanical Seal.

**Bearings:** 20,000 hour B-10 Bearing Life Minimum.

**Lubrication:** Easy Accessable Grease Zerk Fittings.



**Rainbow Manufacturing Company**  
 ONE RAINBOW DRIVE  
 P O BOX 70  
 FITZGERALD, GEORGIA 31750 USA  
 TELEPHONE 912/423/4341  
 FAX 912/423/4645



**Rainbow Model 4X4X13 Clutch Pump**

## DESCRIPTION

### **Rainbow Model 4X4X13 Clutch Pumps**

End suction centrifugal pumps with computer calculated shaft stress and bearing limits of 20,000 hour B-10 bearing life design minimum. The Clutch Pump incorporates a manually engageable clutch mechanism which enables the operator to engage or disengage the pump rotation with the engine running. The pump shaft is constructed of stressproof steel. The pump impeller and volute are all cast iron construction with fully machined exterior surfaces and smoothly cast internal passages with replaceable bronze suction and hub wear rings. The pump has internal balance ports designed to extend packing, wear ring, and bearing life and increase pump performance. Available to fit various SAE housing sizes.

## Rainbow Centrifugal Pumps

### Clutch Mount Engine Drive

## Model 4 X 4 X 13

### FEATURES AND BENEFITS

- \* Capacities - 300 to 800 GPM
- \* Head - Up to 450 Feet
- \* All Cast Iron Construction with Replaceable Nickel / Bronze Wear Rings
- \* Heavy-duty Clutch Components manufactured to Rainbow Specifications by Twin Disc
- \* Over-sized Shaft threaded on end with Large Impeller Nut
- \* 20,000 hour B-10 Bearing Life Design Minimum
- \* Easy Serviceability - Quick Factory Response

#### SPECIFICATIONS

**Material:** Grade 30 Grey Cast Iron.

**Wear Rings:** Replaceable Nickel / Bronze Alloy.

**Impeller:** Enclosed, balanced, keyed to shaft. Precision machined Cast Iron.

**Pump Shaft:** Stressproof steel. Threaded on end for Large Impeller Nut.

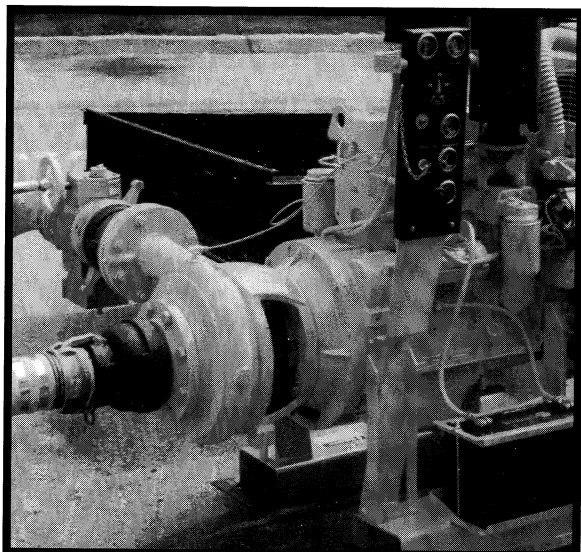
**Seals:** Packing Box Standard. Optional Mechanical Seal.

**Bearings:** 20,000 hour B-10 Bearing Life Minimum.

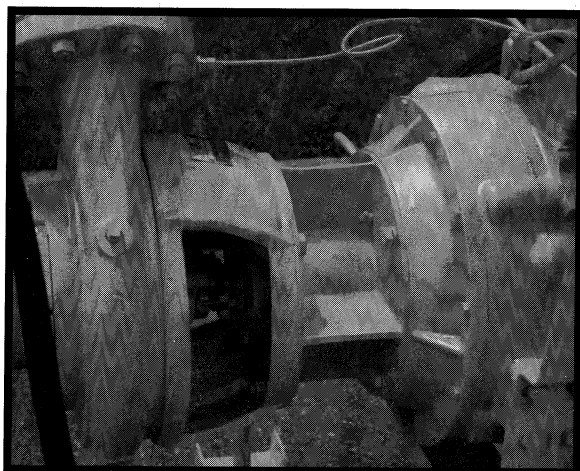
**Lubrication:** Easy Accessable Grease Zerk Fittings.



**Rainbow Manufacturing Company**  
 ONE RAINBOW DRIVE  
 P O BOX 70  
 FITZGERALD, GEORGIA 31750 USA  
 TELEPHONE 912/423/4341  
 FAX 912/423/4645



**Rainbow Model 6X4SX13 SBB Pump**



**Rainbow Model 6X4SX13 DBB Pump**

## DESCRIPTION

### **Rainbow Model 6X4SX13 SBB & DBB Pumps**

End suction centrifugal pumps with computer calculated shaft stress and bearing limits of 20,000 hour B-10 bearing life design minimum. The pump shaft is constructed of stressproof steel. The pump impeller and volute are all cast iron construction with fully machined exterior surfaces and smoothly cast internal passages with replaceable bronze suction and hub wear rings. The pump has internal balance ports designed to extend packing, wear ring, and bearing life and increase pump performance. Available to fit various SAE housing sizes. Includes vibration absorbing rubber drive couplings for connecting pump to engine flywheel.

## Rainbow Centrifugal Pumps

### SAE Mount Engine Drive

## Model 6 X 4S X 13

### FEATURES AND BENEFITS

- \* Capacities - 300 to 800 GPM
- \* Head - Up to 450 Feet
- \* All Cast Iron Construction with Replaceable Nickel / Bronze Wear Rings
- \* Heavy-duty Vibration Absorbing Drive Coupling
- \* Over-sized Shaft threaded on end with Large Impeller Nut
- \* 20,000 hour B-10 Bearing Life Design Minimum
- \* Easy Serviceability - Quick Factory Response

### SPECIFICATIONS

**Material:** Grade 30 Grey Cast Iron.

**Wear Rings:** Replaceable Nickel / Bronze Alloy.

**Impeller:** Enclosed, balanced, keyed to shaft. Precision machined Cast Iron.

**Pump Shaft:** Stressproof steel. Threaded on end for Large Impeller Nut.

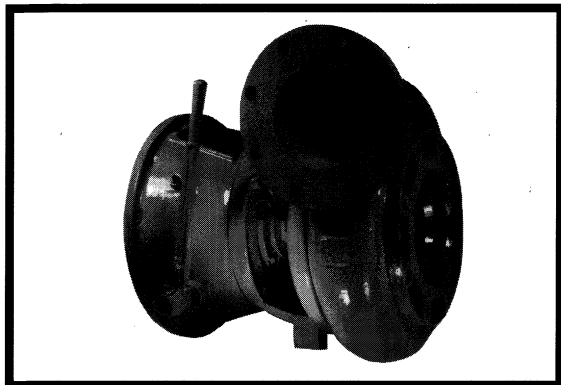
**Seals:** Packing Box Standard. Optional Mechanical Seal.

**Bearings:** 20,000 hour B-10 Bearing Life Minimum.

**Lubrication:** Easy Accessable Grease Zerk Fittings.



**Rainbow Manufacturing Company**  
 ONE RAINBOW DRIVE  
 P O BOX 70  
 FITZGERALD, GEORGIA 31750 USA  
 TELEPHONE 912/423/4341  
 FAX 912/423/4645



**Rainbow Model 6X4SX13 Clutch Pump**

## DESCRIPTION

### **Rainbow Model 6X4SX13 Clutch Pumps**

End suction centrifugal pumps with computer calculated shaft stress and bearing limits of 20,000 hour B-10 bearing life design minimum. The Clutch Pump incorporates a manually engageable clutch mechanism which enables the operator to engage or disengage the pump rotation with the engine running. The pump shaft is constructed of stressproof steel. The pump impeller and volute are all cast iron construction with fully machined exterior surfaces and smoothly cast internal passages with replaceable bronze suction and hub wear rings. The pump has internal balance ports designed to extend packing, wear ring, and bearing life and increase pump performance. Available to fit various SAE housing sizes.

## Rainbow Centrifugal Pumps

### Clutch Mount Engine Drive

## Model 6 X 4S X 13

### FEATURES AND BENEFITS

- \* Capacities - 300 to 800 GPM
- \* Head - Up to 450 Feet
- \* All Cast Iron Construction with Replaceable Nickel / Bronze Wear Rings
- \* Heavy-duty Clutch Components manufactured to Rainbow Specifications by Twin Disc
- \* Over-sized Shaft threaded on end with Large Impeller Nut
- \* 20,000 hour B-10 Bearing Life Design Minimum
- \* Easy Serviceability - Quick Factory Response

#### SPECIFICATIONS

**Material:** Grade 30 Grey Cast Iron.

**Wear Rings:** Replaceable Nickel / Bronze Alloy.

**Impeller:** Enclosed, balanced, keyed to shaft. Precision machined Cast Iron.

**Pump Shaft:** Stressproof steel. Threaded on end for Large Impeller Nut.

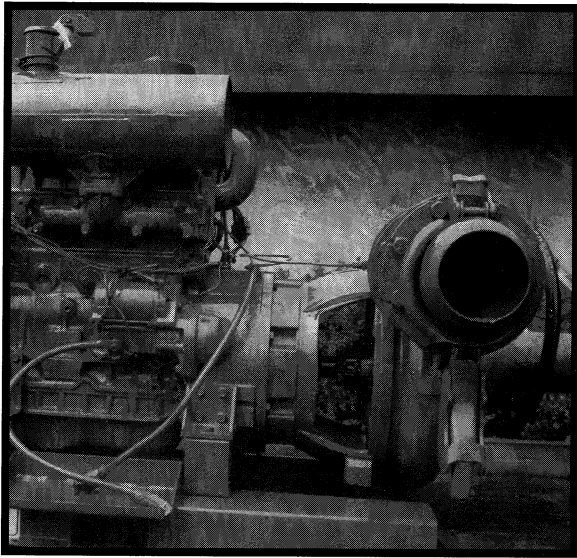
**Seals:** Packing Box Standard. Optional Mechanical Seal.

**Bearings:** 20,000 hour B-10 Bearing Life Minimum.

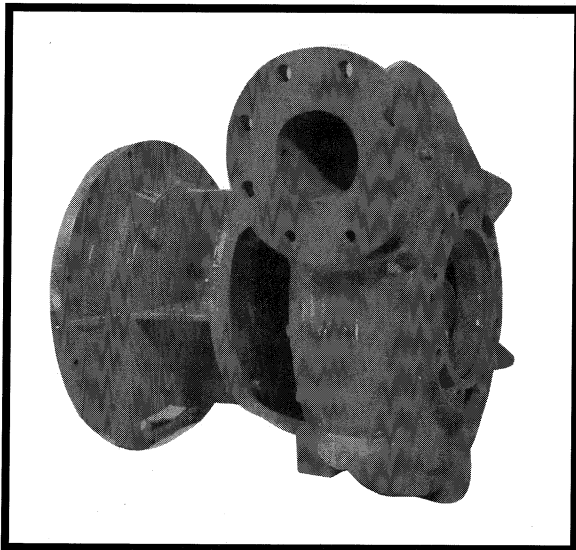
**Lubrication:** Easy Accessable Grease Zerk Fittings.



**Rainbow Manufacturing Company**  
 ONE RAINBOW DRIVE  
 P O BOX 70  
 FITZGERALD, GEORGIA 31750 USA  
 TELEPHONE 912/423/4341  
 FAX 912/423/4645



**Rainbow Model 6X4X13 SBB Pump**



**Rainbow Model 6X4X13 DBB Pump**

## DESCRIPTION

**Rainbow Model 6X4X13 SBB & DBB Pumps**  
End suction centrifugal pumps with computer calculated shaft stress and bearing limits of 20,000 hour B-10 bearing life design minimum. The pump shaft is constructed of stressproof steel. The pump impeller and volute are all cast iron construction with fully machined exterior surfaces and smoothly cast internal passages with replaceable bronze suction and hub wear rings. The pump has internal balance ports designed to extend packing, wear ring, and bearing life and increase pump performance. Available to fit various SAE housing sizes. Includes vibration absorbing rubber drive couplings for connecting pump to engine flywheel.

# Rainbow Centrifugal Pumps

## SAE Mount Engine Drive

## Model 6 X 4 X 13

### FEATURES AND BENEFITS

- \* Capacities - 400 to 1300 GPM
- \* Head - Up to 400 Feet
- \* All Cast Iron Construction with Replaceable Nickel / Bronze Wear Rings
- \* Heavy-duty Vibration Absorbing Drive Coupling
- \* Over-sized Shaft threaded on end with Large Impeller Nut
- \* 20,000 hour B-10 Bearing Life Design Minimum
- \* Easy Serviceability - Quick Factory Response

### SPECIFICATIONS

**Material:** Grade 30 Grey Cast Iron.

**Wear Rings:** Replaceable Nickel / Bronze Alloy.

**Impeller:** Enclosed, balanced, keyed to shaft. Precision machined Cast Iron.

**Pump Shaft:** Stressproof steel. Threaded on end for Large Impeller Nut.

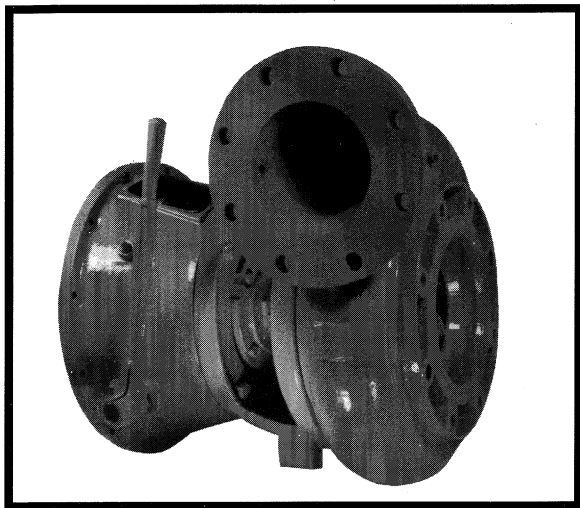
**Seals:** Packing Box Standard. Optional Mechanical Seal.

**Bearings:** 20,000 hour B-10 Bearing Life Minimum.

**Lubrication:** Easy Accessable Grease Zerk Fittings.



**Rainbow Manufacturing Company**  
ONE RAINBOW DRIVE  
P O BOX 70  
FITZGERALD, GEORGIA 31750 USA  
TELEPHONE 912/423/4341  
FAX 912/423/4645



**Rainbow Model 6X4X13 Clutch Pump**

## DESCRIPTION

### **Rainbow Model 6X4X13 Clutch Pumps**

End suction centrifugal pumps with computer calculated shaft stress and bearing limits of 20,000 hour B-10 bearing life design minimum. The Clutch Pump incorporates a manually engageable clutch mechanism which enables the operator to engage or disengage the pump rotation with the engine running. The pump shaft is constructed of stressproof steel. The pump impeller and volute are all cast iron construction with fully machined exterior surfaces and smoothly cast internal passages with replaceable bronze suction and hub wear rings. The pump has internal balance ports designed to extend packing, wear ring, and bearing life and increase pump performance. Available to fit various SAE housing sizes.

## Rainbow Centrifugal Pumps

### Clutch Mount Engine Drive

## Model 6 X 4 X 13

### FEATURES AND BENEFITS

- \* Capacities - 400 to 1300 GPM
- \* Head - Up to 400 Feet
- \* All Cast Iron Construction with Replaceable Nickel / Bronze Wear Rings
- \* Heavy-duty Clutch Components manufactured to Rainbow Specifications by Twin Disc
- \* Over-sized Shaft threaded on end with Large Impeller Nut
- \* 20,000 hour B-10 Bearing Life Design Minimum
- \* Easy Serviceability - Quick Factory Response

#### SPECIFICATIONS

**Material:** Grade 30 Grey Cast Iron.

**Wear Rings:** Replaceable Nickel / Bronze Alloy.

**Impeller:** Enclosed, balanced, keyed to shaft. Precision machined Cast Iron.

**Pump Shaft:** Stressproof steel. Threaded on end for Large Impeller Nut.

**Seals:** Packing Box Standard. Optional Mechanical Seal.

**Bearings:** 20,000 hour B-10 Bearing Life Minimum.

**Lubrication:** Easy Accessable Grease Zerk Fittings.



**Rainbow Manufacturing Company**

ONE RAINBOW DRIVE

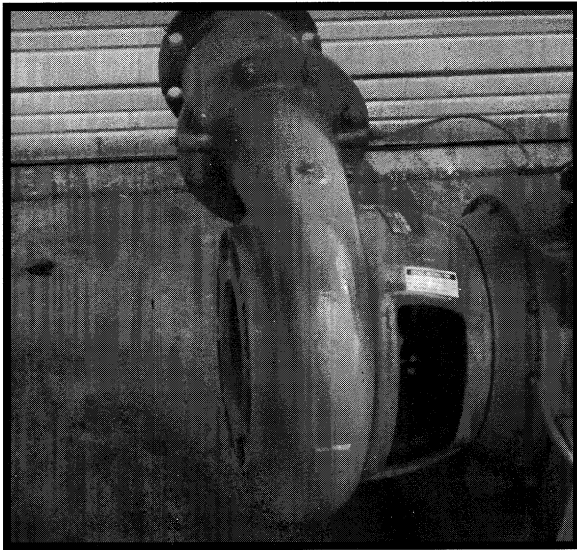
P O BOX 70

FITZGERALD, GEORGIA 31750 USA

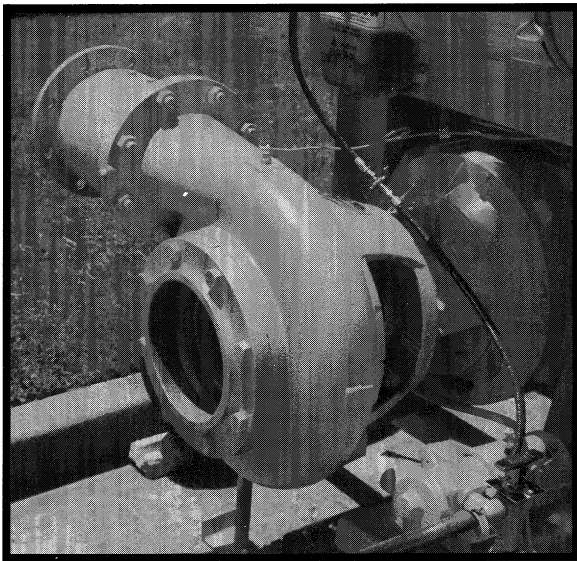
TELEPHONE 912/423/4341

FAX 912/423/4645





**Rainbow Model 8X6X13 SBB Pump**



**Rainbow Model 8X6X13 DBB Pump**

## DESCRIPTION

### **Rainbow Model 8X6X13 SBB & DBB Pumps**

End suction centrifugal pumps with computer calculated shaft stress and bearing limits of 20,000 hour B-10 bearing life design minimum. The pump shaft is constructed of stressproof steel. The pump impeller and volute are all cast iron construction with fully machined exterior surfaces and smoothly cast internal passages with replaceable bronze suction and hub wear rings. The pump has internal balance ports designed to extend packing, wear ring, and bearing life and increase pump performance. Available to fit various SAE housing sizes. Includes vibration absorbing rubber drive couplings for connecting pump to engine flywheel.

# Rainbow Centrifugal Pumps

## SAE Mount Engine Drive

## Model 8 X 6 X 13

### FEATURES AND BENEFITS

- \* Capacities - 700 to 2100 GPM
- \* Head - Up to 350 Feet
- \* All Cast Iron Construction with Replaceable Nickel / Bronze Wear Rings
- \* Heavy-duty Vibration Absorbing Drive Coupling
- \* Over-sized Shaft threaded on end with Large Impeller Nut
- \* 20,000 hour B-10 Bearing Life Design Minimum
- \* Easy Serviceability - Quick Factory Response

#### SPECIFICATIONS

**Material:** Grade 30 Grey Cast Iron.

**Wear Rings:** Replaceable Nickel / Bronze Alloy.

**Impeller:** Enclosed, balanced, keyed to shaft. Precision machined Cast Iron.

**Pump Shaft:** Stressproof steel. Threaded on end for Large Impeller Nut.

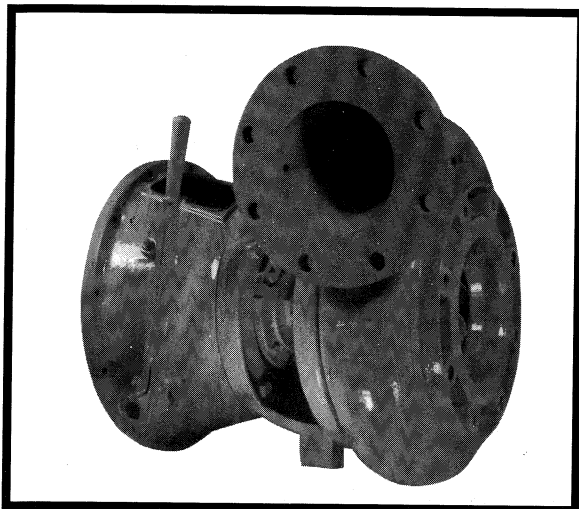
**Seals:** Packing Box Standard. Optional Mechanical Seal.

**Bearings:** 20,000 hour B-10 Bearing Life Minimum.

**Lubrication:** Easy Accessable Grease Zerk Fittings.



**Rainbow Manufacturing Company**  
 ONE RAINBOW DRIVE  
 P O BOX 70  
 FITZGERALD, GEORGIA 31750 USA  
 TELEPHONE 912/423/4341  
 FAX 912/423/4645



**Rainbow Model 8X6X13 Clutch Pump**

## DESCRIPTION

### **Rainbow Model 8X6X13 Clutch Pumps**

End suction centrifugal pumps with computer calculated shaft stress and bearing limits of 20,000 hour B-10 bearing life design minimum. The Clutch Pump incorporates a manually engageable clutch mechanism which enables the operator to engage or disengage the pump rotation with the engine running. The pump shaft is constructed of stressproof steel. The pump impeller and volute are all cast iron construction with fully machined exterior surfaces and smoothly cast internal passages with replaceable bronze suction and hub wear rings. The pump has internal balance ports designed to extend packing, wear ring, and bearing life and increase pump performance. Available to fit various SAE housing sizes.

# Rainbow Centrifugal Pumps

## Clutch Mount Engine Drive

# Model 8 X 6 X 13

## FEATURES AND BENEFITS

- \* Capacities - 700 to 2100 GPM
- \* Head - Up to 350 Feet
- \* All Cast Iron Construction with Replaceable Nickel / Bronze Wear Rings
- \* Heavy-duty Clutch Components manufactured to Rainbow Specifications by Twin Disc
- \* Over-sized Shaft threaded on end with Large Impeller Nut
- \* 20,000 hour B-10 Bearing Life Design Minimum
- \* Easy Serviceability - Quick Factory Response

### SPECIFICATIONS

**Material:** Grade 30 Grey Cast Iron.

**Wear Rings:** Replaceable Nickel / Bronze Alloy.

**Impeller:** Enclosed, balanced, keyed to shaft. Precision machined Cast Iron.

**Pump Shaft:** Stressproof steel. Threaded on end for Large Impeller Nut.

**Seals:** Packing Box Standard. Optional Mechanical Seal.

**Bearings:** 20,000 hour B-10 Bearing Life Minimum.

**Lubrication:** Easy Accessable Grease Zerk Fittings.



**Rainbow Manufacturing Company**  
 ONE RAINBOW DRIVE  
 P O BOX 70  
 FITZGERALD, GEORGIA 31750 USA  
 TELEPHONE 912/423/4341  
 FAX 912/423/4645